

Name: _____

Thorax and Abdomen Anatomy Scavenger Hunt

Bony Tissues

- Rib Cage
 - True Ribs
 - False Ribs
 - Floating Ribs*
- Sternum
 - Body of Sternum
 - Manubrium
 - Xiphoid Process
- Hyoid Bone

Soft Tissues

Organs:

- Heart
 - Atria
 - Ventricles
 - Aorta
 - Pulmonary Veins
 - Pulmonary Artery
 - Superior Vena Cava
 - Inferior Vena Cava

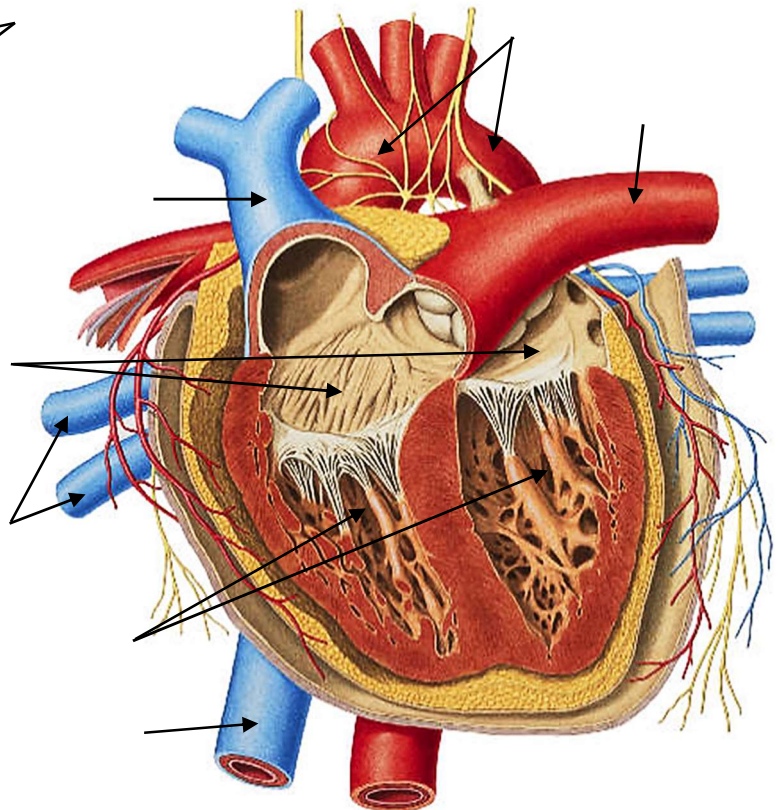
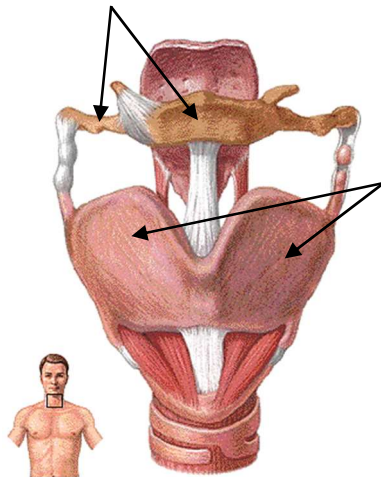
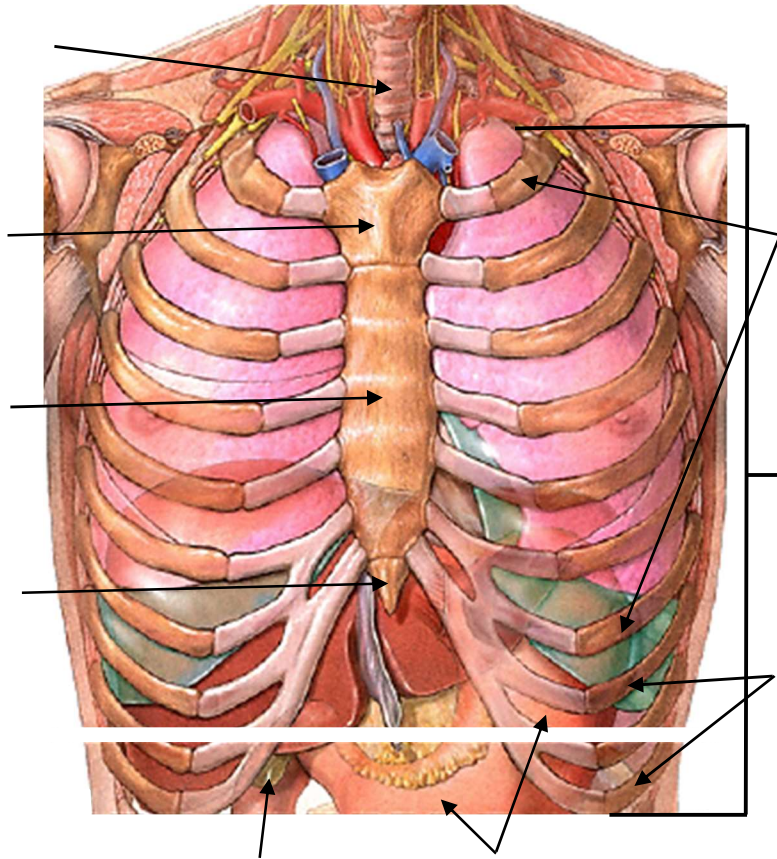
- Larynx
- Trachea
- Pleural Space
- Lungs
 - Bronchi
 - Bronchioles
 - Alveoli*

- Esophagus
- Stomach
- Pancreas
- Spleen
- Liver
- Gallbladder
- Small Intestine
- Large Intestine
- Appendix

- Kidneys
- Bladder
- Ureters
- Urethra
- Ovary
- Uterus
- Vagina
- Prostate Gland
- Testicle
- Scrotum
- Penis

Muscles:

- Pectoralis Major
- Pectoralis Minor
- External Intercostals



Internal Intercostals
Diaphragm
Rectus Abdominis
Transverse Abdominis
External Oblique
Internal Oblique

